

## Is Invisible Aligner Treatment for me?

### Easier than ever!

Many adults and teenagers are eager to achieve beautiful smiles without wearing braces.

**Simpli5** is an express aligner system that corrects the minor imperfections you dislike in only 5-6 months. **Simpli5** is ideal for the front 4-6 teeth that are visible when you smile, even if you have previously completed orthodontic treatment.

Simply schedule a consultation with us. Once we determine that you are a candidate, we will take impressions that will be used to develop a set of aligners precisely for your smile. **You'll be able to begin aligner treatment just 4-5 weeks later.**

**Simpli5**  
EXPRESS ALIGNER SYSTEM

## The Right Choice for Moderate Corrections and Relapse Cases

**Simpli5**  
EXPRESS ALIGNER SYSTEM

- Most cases finish in 5 months.
- Ideal for any anterior case requiring minor to moderate corrections and orthodontic relapse.
- Impressions to aligners in just 4-5 weeks



**Ormco**

Basicweg 20 • 3821 BR Amersfoort • The Netherlands • [www.ormcoeurope.com](http://www.ormcoeurope.com)  
762-6098 Rev.A

**Simpli5**  
EXPRESS ALIGNER SYSTEM



Are you a candidate for Invisible Aligner Treatment?

**Ormco**

Types of cases treated with Simpli5

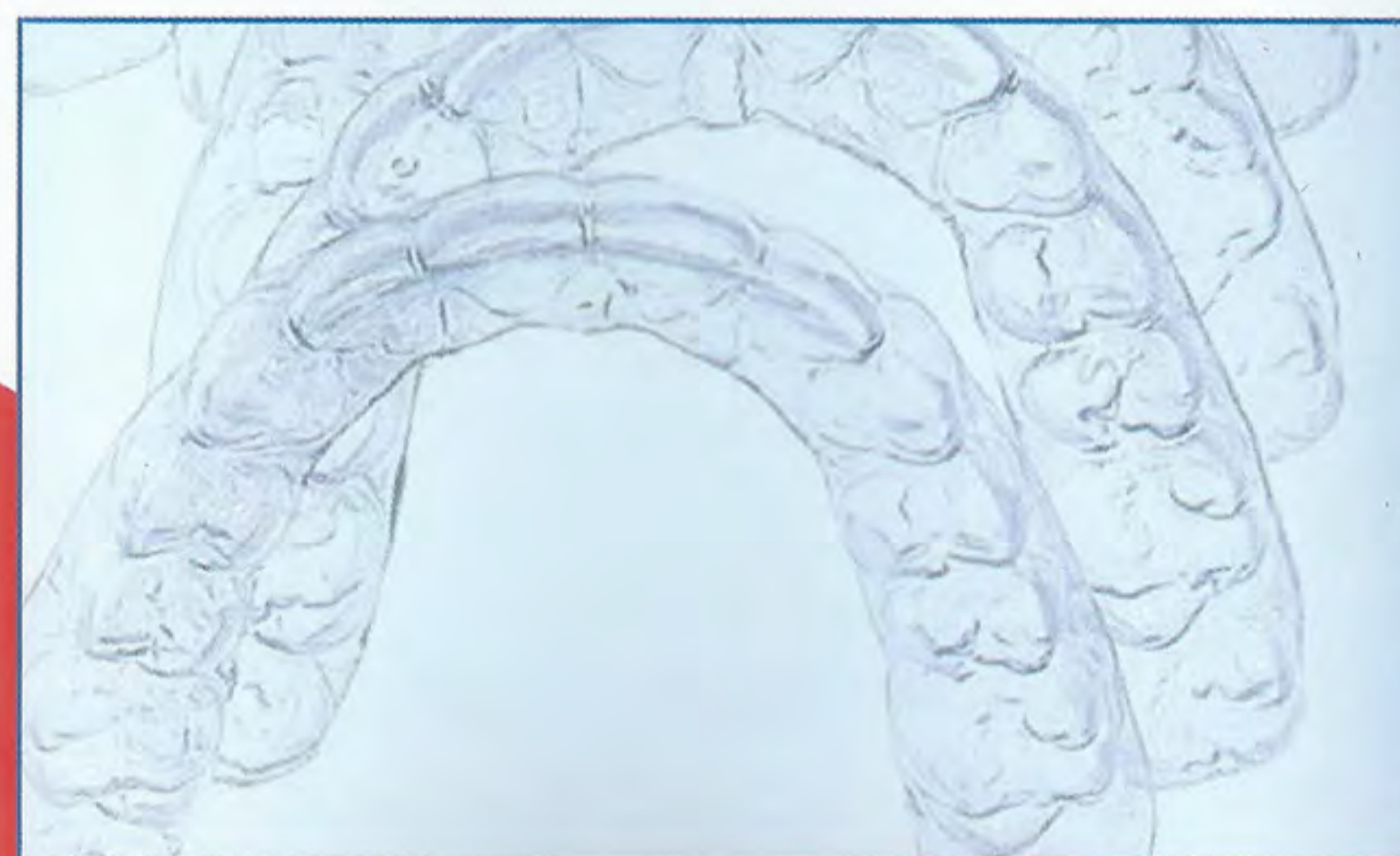


**Simpli5**  
EXPRESS ALIGNER SYSTEM

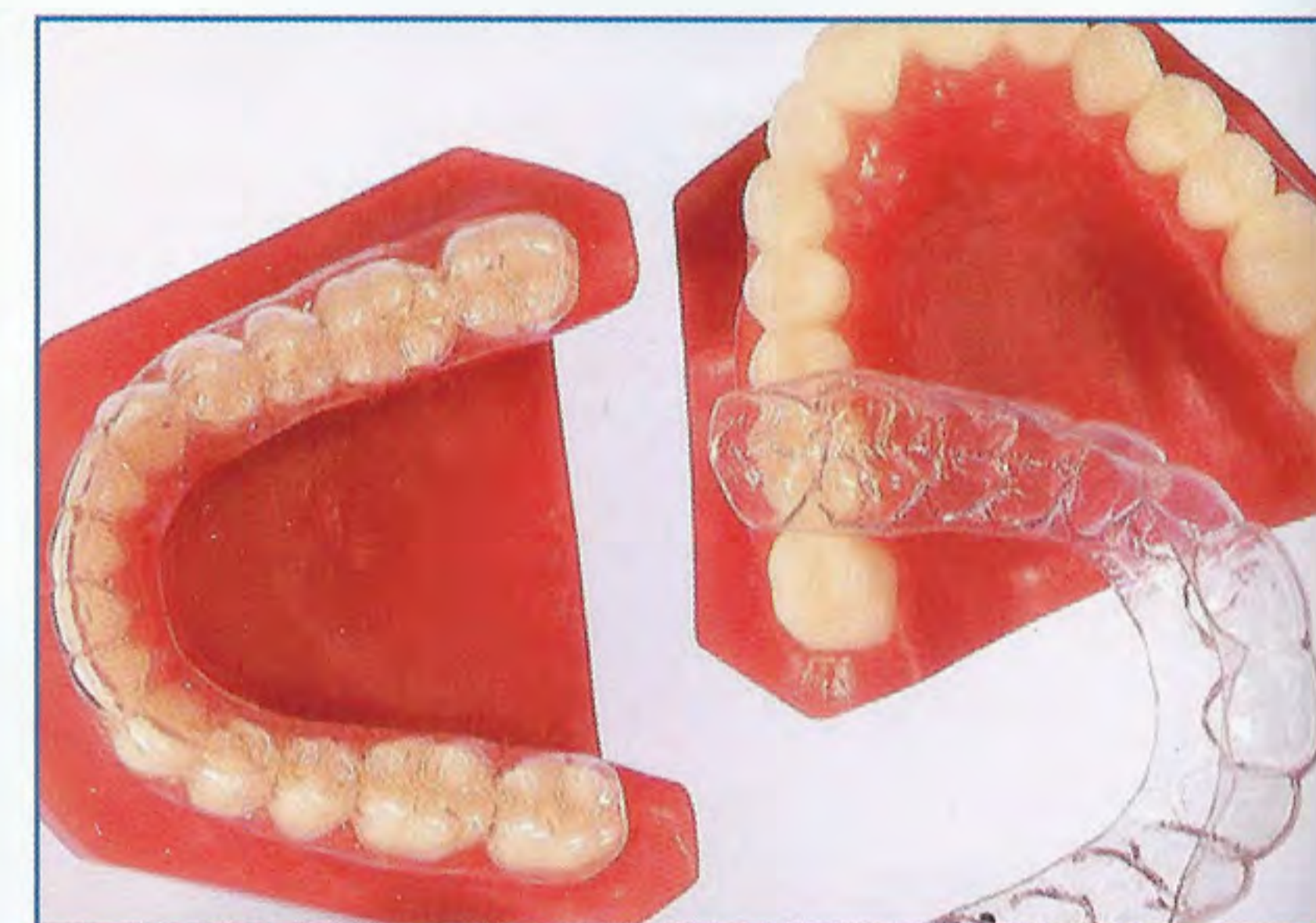
**Simpli5** is the best solution for cases involving **minor to moderate anterior** crowding or spacing and for orthodontic relapse cases.

### What is Simpli5

- Developed for minor to moderate correction
- Only five virtually invisible plastic Aligners
- Aligners are only worn for 3-4 weeks at a time
- Custom crafted to give you the smile you deserve



Are you a candidate for Invisible Aligner Treatment?



### Fast

- You can start treatment 4-5 weeks after taking an impression.
- Most cases are completed in 5 months.
- Wear each of 5 trays for only 3-4 weeks

### Convenient

- Virtually invisible; you can confidentially work, exercise, and socialize while wearing your **Simpli5** aligners.
- Remove your aligners at meal time and for dental hygiene.
- **Simpli5** works for patients needing both dual arch or only one arch.

### Comfortable

- Minimal discomfort.
- There is minimal to no speech interference.
- The unique flexible duraclear material allows for gentle, consistent movement.